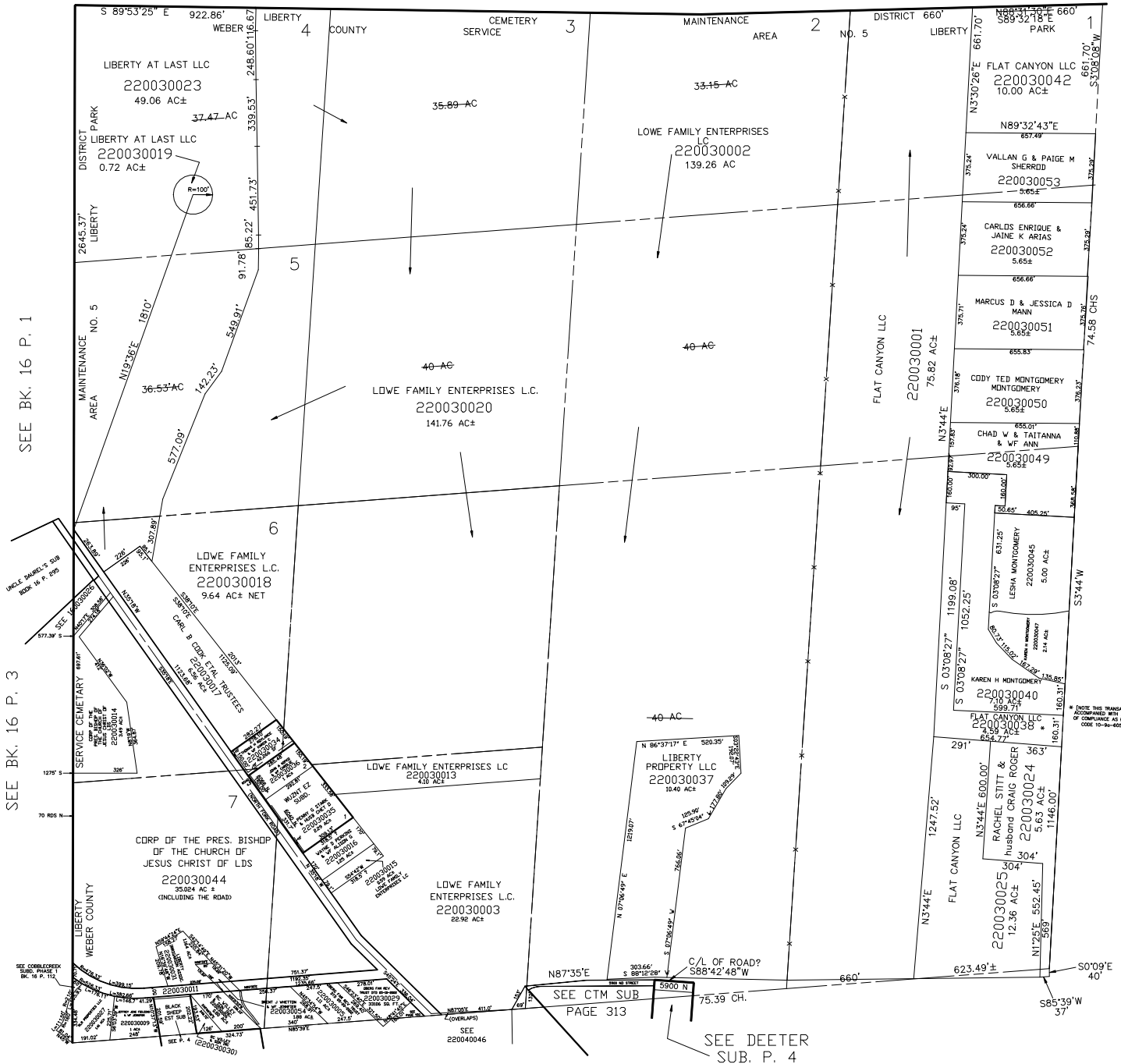


SECTION 6, T.7N., R.1E., S.L.B. & M.

IN WEBER COUNTY  
SCALE 1" = 400'

TAXING UNIT: 36

SEE BOOK 23 PAGE 44



SEE BK. 16 P. 1

SEE BK. 16 P. 3

SEE PAGE 2

\* NOTE THE TRANSACTION MUST BE ACCOMPANIED WITH A WRITTEN NOTICE OF COMPLIANCE AS REQUIRED BY ORIGIN CODE 10-9-605 (R2016027)

SEE CTM SUB PAGE 313

SEE DEETER SUB. P. 4

SEE PAGE 4